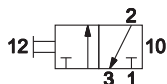
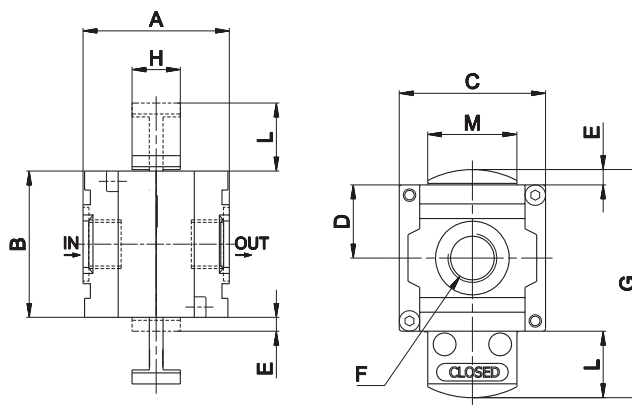


The lockable valve is a 3 way 2 position manual valve. In the closed position it enables discharge of the downstream system of the air preparation equipment. By using one or two locks (not included) the user is not allowed to pressurize the system accidentally.

Size	1	
Part no.	HZE1P10G	HZE1P15G
Threaded port	G3/8	G1/2
Flow rate (NI/min) ^(A)	5000	
Max inlet pressure (bar-MPa-psi)	10-1-145	
Fluid	compressed air	
Temperature(°C)	0 ÷ 60	
Weight (Kg)	0,28	

(A) = inlet pressure 6 bar, outlet pressure 5 bar - Δp 1 bar

HZE-P



Size	A	B	C	D	E	F	G	H	L	M
1	50	50	50	25	5	G3/8-G1/2	78	17	23	30,5

